



BLOCK & CHISEL

CARE & MAINTENANCE MANUAL

For any queries please contact us at info@blockandchisel.co.za or +27 (0)21 691 0878 during office hours.



Upholstery

To ensure the longevity of this piece, avoid dampness, hot or cold conditions and excessive sunlight as it will lead to the colour fading.

Our sofas are generally made with loose covers for easy cleaning. For best results, dry cleaning only as it reduces the chance of shrinkage. We also advise no spot cleaning.

The cushion inners are made up of three separate layers. The top and bottom layers contain down and the core is made from a foam mix for extra stability. To maintain the original softness and resiliency of the cushions, hand fluff and reverse cushions regularly. Vacuum to remove surface dirt.

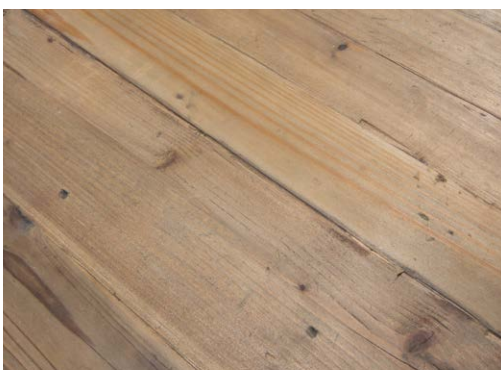


Sealed Wood Finishes

Avoid excessive sunlight, dampness and hot or cold conditions.

For routine cleaning, use a cloth that has been dampened with water or diluted cleaning polish. Clean spills or smudges with a damp cloth moistened in mild soap or cleaning polish. For nickel and brass hardware, simply clean with a damp cloth.

Place a felt or leather pad under all lamp bases and accessories to avoid surface scratches. Polish only every six months with a silicone-free polish, as polishing too often may result in a waxy build-up.



Natural Raw Wood

The wood in this state is untreated, therefore contact with all liquids (especially red wine and oils) should be avoided.

Avoid excessive sunlight, dampness, and hot or cold conditions. Clean spills or smudges with a damp cloth. Avoid all polishes, waxes and sealers, unless done by a professional.

The natural look and feel of this product is what you love about it, so any marks that might develop should be viewed as added character.





Leather

For routine cleaning, dust lightly with a soft, dry cloth.

Your furniture, and especially leather furniture, should become more characterful with age. Any marks and scratches will add to the character of the piece.

Avoid excessive sunlight, as this will lead to colour and leather deterioration.



Rattan / Cane

Keep rattan chairs and furniture away from extreme heat situations and areas with low humidity.

These conditions could cause the cane to dry out and become brittle and break. Also direct sunlight should be avoided. Consider using a humidifier in the winter which can be especially helpful to keep the air moist and not too dry.

Using a high-oil content furniture polish product when you dust helps to keep the cane supple and prevent brittle breakages. Ask our Sales Consultants in store about available oil polishes.



Stone / Cement

The stone is sealed with a wax sealer for protection against staining. Use mild soap and water to wipe down the surface. Do not use abrasive or ammonia/bleach based products.

It is recommended not to use natural cleaning products as these usually have a high citric content (very acidic) and can damage the surface.

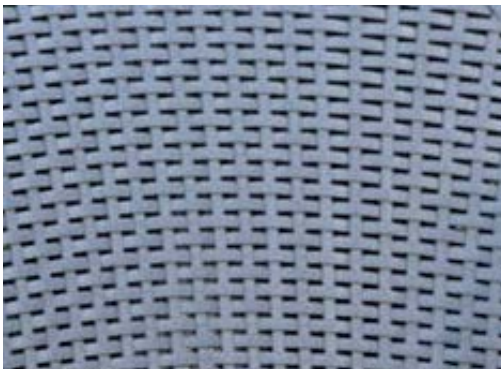




Metal

To maintain shine and avoid rust on any metal type, it is advisable to keep furniture pieces dry at all times. Wipe down regularly to remove dust build-up. If near the coast, wipe your piece weekly with a damp cloth to remove salt residue that may have settled.

Always dry the metal after it has been wiped. If rust spots develop, apply a fine sandpaper to prevent spread.



PVC

Furniture made from Polyvinyl Chloride (PVC), Polyethylene (PE) and Polyurethane (PU) plastics are able to withstand heavy use and when expressly stipulated, they are well-suited to outdoor conditions such as UV light, as well as humid or damp conditions.

Caring for your synthetic resin-based furniture is easy. When not in use, outdoor pieces should be covered or packed away to prolong life. Cleaning should be done using non-abrasive soap and cloths to avoid scratching or colour loss.



RUGS

COTTON RUGS

Machine wash in cool water on a gentle cycle, rinsing thoroughly. Tumble dry on low setting. Place large rugs on a vinyl or concrete floor or place an old blanket beneath them to prevent creasing. Sponge commercial carpet cleaning foam over the surface and rub it in according to the product directions.

WOOL RUGS

Vacuum often. Rotate regularly (annually should be fine) so your rug receives even wear. Blot and remove any stains as soon as they happen. Professionally clean every two or three years, if foot traffic is high.

SISAL & JUTE

Vacuum regularly and avoid spills. Should spills occur blot up immediately with colourfast clean cloth. Dry area with hair dryer. Liquid spills, including water, will cause watermarks so dry immediately.

COTTON RUGS



WOOL RUGS



SISAL & JUTE

